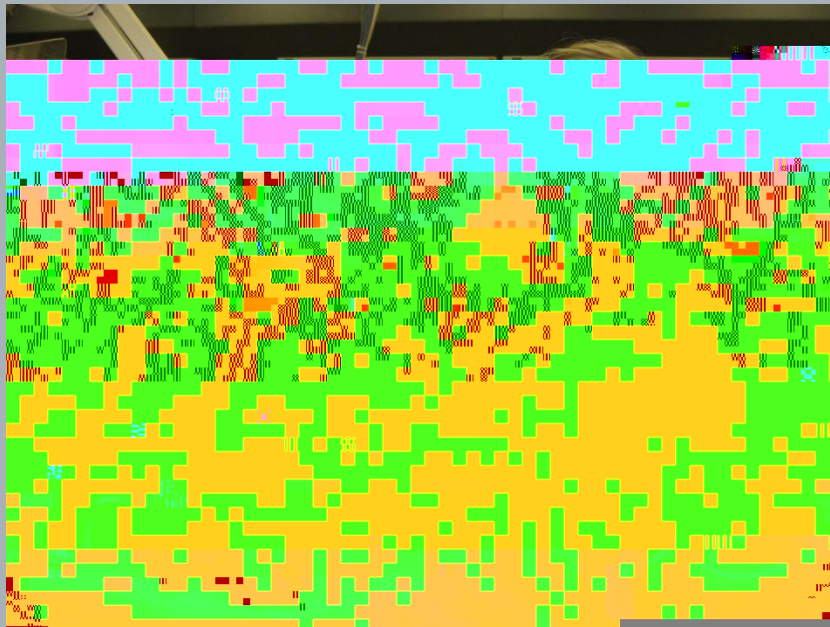
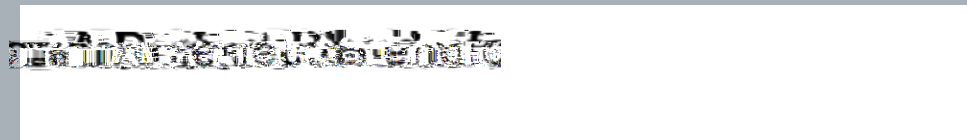


NHCC MLT to SCSU MLS Partnership Overview

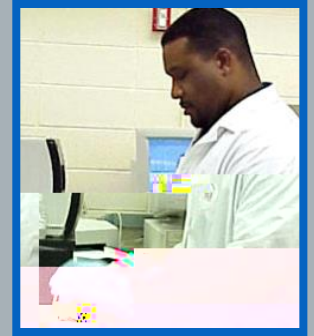
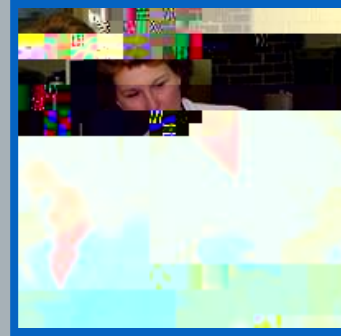
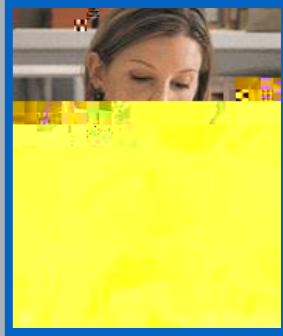


St. Cloud State University Contact:

Louise Millis

-

Do you see yourself here?



American Society for American Society for Clinical Pathology (ASCP), Chicago, IL
Clinical Pathology (ASCP), Chicago, IL

Who Works in a Clinical Laboratory?

Post HS	Phlebotomist (PBT)*
Associate (2 yr. degree)	Medical Laboratory Technician (MLT)*
	Histotechnician (HT)**
Baccalaureate (4 yr. degree)	Medical Laboratory Scientist (MLS)***
	Cytotechnologist (CT)
	Histotechnologist (HTL)
Masters, PhD, MD	Directors, Managers, Coordinators

Why Consider a Career in the Clinical Laboratory?

-

-

-

-

-

-

St Cloud State University (SCSU)

Medical Laboratory Science

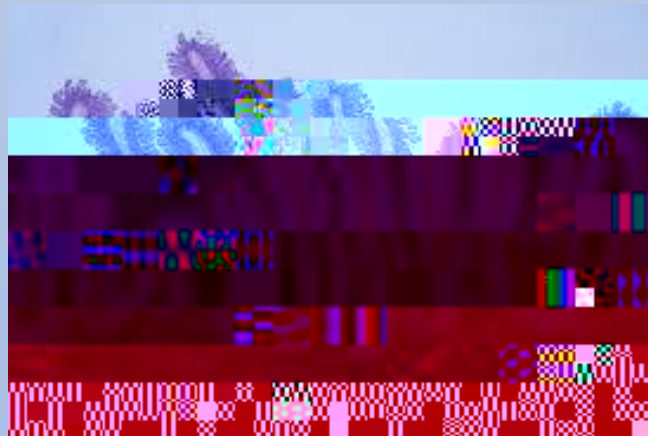
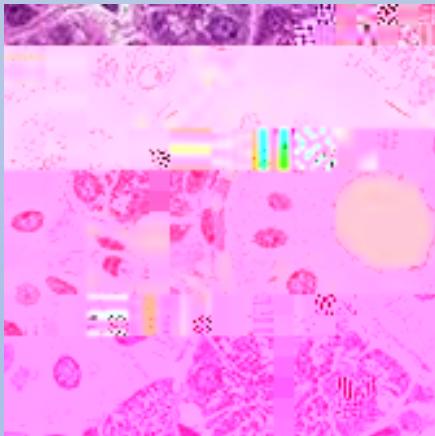
Bachelor of Science (BS)

- -
- -
 -

St Cloud State University (SCSU)

Histotechnician Certificate

-
-
-



Education

-

-

Departments of the Clinical Laboratory

-
-
-
-
-
-

MLT and MLS

-
-
-
-
-
-

Vital Work

-

-

National Employment Outlook

MLT & MLS – HIGHER IN MN



Certification & Beyond

-

-

-

Chose a Career that wants you

Questions?

- We have answers!
-

Further Information

-

-

-